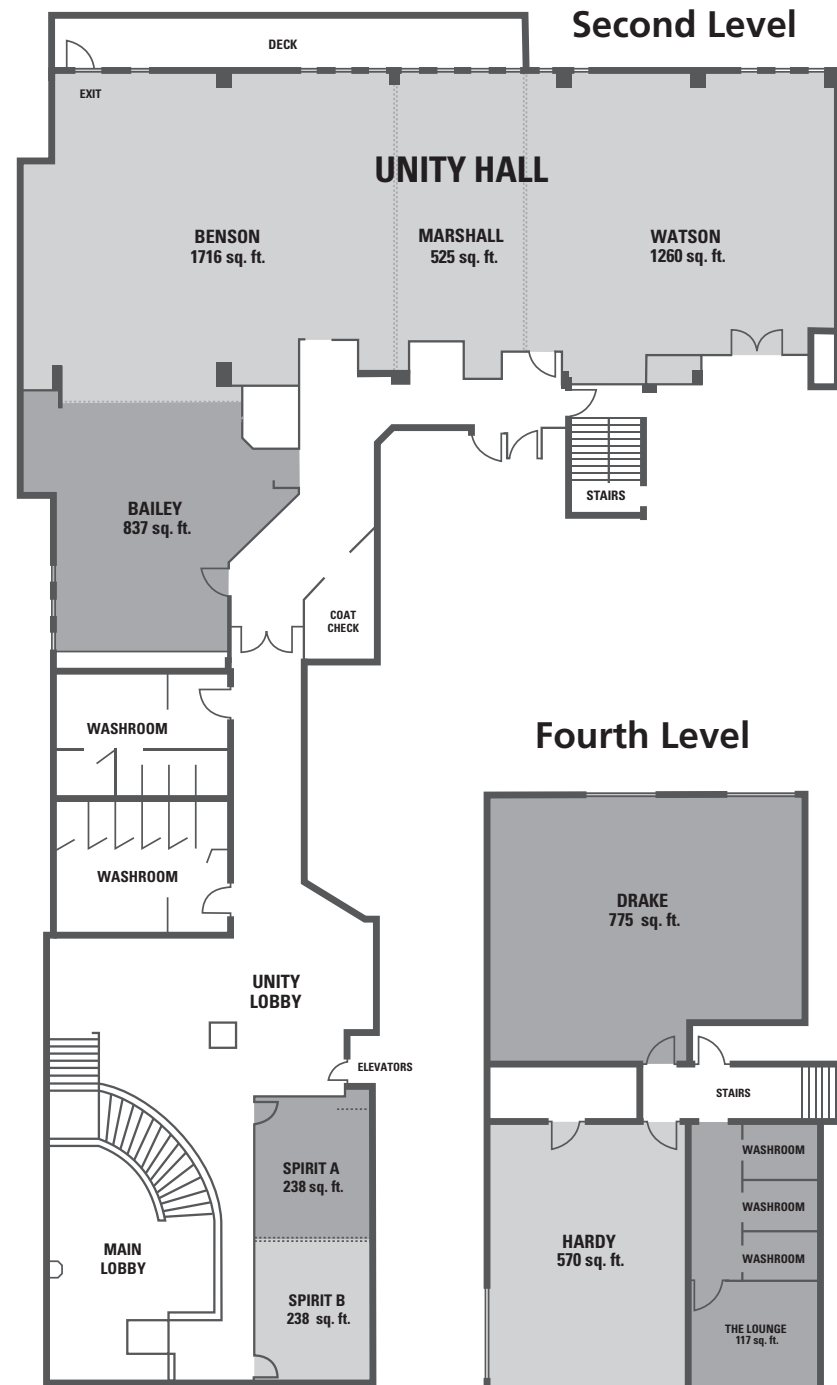


# FACILITIES AND RENTALS



|   | Room Name  | Total Area<br>LxW     | Max Ceiling<br>Height | Theatre | Classroom<br>Straights | Classroom<br>Rounds (6) | Rounds<br>of 8 | Board-<br>room | U-shape | Hollow<br>Square | Reception | Cost<br>Per Use |
|---|--|-----------------------|-----------------------|---------|------------------------|-------------------------|----------------|----------------|---------|------------------|-----------|-----------------|
| Lower Level                                       | <b>Imperial</b><br>70 ft x 68 ft x 8 ft                  | 4,760 ft <sup>2</sup> | 9.1 ft                | 450     | 180                    | 190                     | 250            | 50             | 60      | 100              | 500       | \$600           |
|   | <b>Silver/Gray/Golden/Hazel</b><br>41 ft x 128 ft x 8 ft | 3,858 ft <sup>2</sup> | 9.1 ft                | 300     | 100                    | 150                     | 200            | 75             | 60      | 100              | 250       | \$500           |
|   | <b>Golden</b> 25 ft x 38 ft x 8 ft                       | 950 ft <sup>2</sup>   | 9.1 ft                | 75      | 36                     | 36                      | 48             | 25             | 25      | 30               | 100       | \$200           |
|   | <b>Golden/Hazel</b> 25 ft x 72 ft x 8 ft                 | 1,825 ft <sup>2</sup> | 9.1 ft                | 200     | 64                     | 60                      | 80             | 50             | 50      | 60               | 150       | \$300           |
|   | <b>Hazel</b> 25 ft x 35 ft x 8 ft                        | 875 ft <sup>2</sup>   | 9.1 ft                | 75      | 36                     | 36                      | 48             | 25             | 25      | 30               | 75        | \$200           |
|   | <b>Gray</b> 25 ft x 19 ft x 8 ft                         | 475 ft <sup>2</sup>   | 9.1 ft                | 25      | 16                     | 12                      | 24             | 15             | 12      | 16               | -         | \$100           |
|   | <b>Gray/Golden</b> 25 ft x 56 ft x 8 ft                  | 1,425 ft <sup>2</sup> | 9.1 ft                | 100     | 40                     | 48                      | 64             | 32             | 30      | 40               | 100       | \$250           |
|   | <b>Gray/Golden/Hazel</b><br>25 ft x 91 ft x 8 ft         | 2,275 ft <sup>2</sup> | 9.1 ft                | 225     | 80                     | 72                      | 96             | 50             | 50      | 60               | 150       | \$400           |
|   | <b>Silver</b> 41 ft x 38 ft x 8 ft                       | 1,558 ft <sup>2</sup> | 9.1 ft                | 150     | 56                     | 72                      | 96             | 50             | 50      | 60               | 100       | \$250           |
|   | <b>Silver/Gray</b> 41 ft x 56 ft x 8 ft                  | 2,033 ft <sup>2</sup> | 9.1 ft                | 200     | 75                     | 84                      | 112            | 50             | 50      | 60               | 150       | \$300           |
| <b>Silver/Gray/Golden</b><br>41 ft x 94 ft x 8 ft | 2,983 ft <sup>2</sup>                                    | 9.1 ft                | 300                   | 100     | 120                    | 160                     | 75             | 60             | 75      | 200              | \$400     |                 |
| Second Level                                      | <b>Unity Hall</b> 70 ft x 95 ft x 10 ft                  | 4,338 ft <sup>2</sup> | 10 ft                 | 350     | 100                    | 150                     | 200            | 80             | 80      | 100              | 350       | \$500           |
|   | <b>Benson</b> 39 ft x 44 ft x 10 ft                      | 1,716 ft <sup>2</sup> | 10 ft                 | 175     | 60                     | 72                      | 96             | 40             | 40      | 50               | 100       | \$200           |
|   | <b>Benson/Marshall</b><br>39 ft x 59 ft x 10 ft          | 2,301 ft <sup>2</sup> | 10 ft                 | 200     | 72                     | 102                     | 128            | 50             | 60      | 75               | 150       | \$300           |
|   | <b>Benson/Marshall/Watson</b><br>39 ft x 95 ft x 10 ft   | 3,705 ft <sup>2</sup> | 10 ft                 | 300     | 100                    | 150                     | 175            | 80             | 80      | 100              | 200       | \$400           |
|   | <b>Bailey</b> 31 ft x 27 ft x 10 ft                      | 837 ft <sup>2</sup>   | 10 ft                 | 50      | 32                     | 24                      | 32             | 20             | 20      | 20               | -         | \$200           |
|   | <b>Bailey/Benson</b> 70 ft x 44 ft x 10 ft               | 2,553 ft <sup>2</sup> | 10 ft                 | 200     | 72                     | 96                      | 128            | 50             | 40      | 50               | 150       | \$300           |
|   | <b>Bailey/Benson/Marshall</b><br>70 ft x 59 ft x 10 ft   | 3,078 ft <sup>2</sup> | 10 ft                 | 300     | 100                    | 108                     | 112            | 50             | 60      | 75               | 250       | \$350           |
|   | <b>Watson</b> 35 ft x 36 ft x 10 ft                      | 1,260 ft <sup>2</sup> | 10 ft                 | 100     | 50                     | 54                      | 72             | 30             | 30      | 40               | 100       | \$200           |
|   | <b>Marshall</b> 35 ft x 15 ft x 10 ft                    | 525 ft <sup>2</sup>   | 10 ft                 | 50      | 20                     | 24                      | 32             | 24             | 20      | 24               | -         | \$150           |
|   | <b>Watson/Marshall</b> 35 ft x 51 ft x 10 ft             | 1,785 ft <sup>2</sup> | 10 ft                 | 150     | 60                     | 72                      | 96             | 40             | 40      | 50               | 100       | \$300           |
|   | <b>Spirit A</b> 17.5 ft x 13.6 ft x 8ft                  | 238 ft <sup>2</sup>   | 8 ft                  | 25      | 12                     | 12                      | 16             | 12             | 12      | 16               | 20        | \$200           |
|   | <b>Spirit B</b> 17.5 ft x 13.6 ft x 8ft                  | 238 ft <sup>2</sup>   | 8 ft                  | 25      | 12                     | 12                      | 16             | 12             | 12      | 16               | 20        | \$200           |
| <b>Spirit (A&amp;B)</b> 35 ft x 13.6 ft x 8ft     | 476 ft <sup>2</sup>                                      | 8 ft                  | 50                    | 24      | 24                     | 32                      | 24             | 24             | 24      | 40               | \$300     |                 |
| Fourth Level                                      | <b>Drake</b> 25 ft x 31 ft x 8 ft                        | 775 ft <sup>2</sup>   | 9.2 ft                | 60      | 24                     | 30                      | 40             | 20             | 24      | 30               | 50        | \$200           |
|   | <b>Hardy</b> 30 ft x 19 ft x 8 ft                        | 570 ft <sup>2</sup>   | 9.2 ft                | 50      | 20                     | 24                      | 32             | 16             | 20      | 24               | 40        | \$200           |
|   | <b>The Lounge</b> 13 ft x 9 ft x 8ft                     | 117 ft <sup>2</sup>   | 9.6 ft                | -       | -                      | -                       | -              | -              | -       | -                | -         | \$150           |